



British Universities & Colleges Sport

Fleet Racing Championship 9th - 10th November 2024

Royal Torbay Yacht Club

12 Beacon Terrace, Torquay, England, TQ1 2BH

SAILING INSTRUCTIONS

The notation (DP) in a rule of the Sailing Instructions means that the penalty for a breach of that rule may, at the discretion of the protest committee, be less than disqualification. The notation (NP) in a rule means that a boat may not protest another boat for breaking that rule. This changes RRS 60.1(a)

1. RULES

- 1.1. The event will be governed by the rules as defined in The Racing Rules of Sailing 2021-2024 including Royal Yachting Association (RYA) prescriptions.
- 1.2. (NP) Rules applicable to each class shall apply, except where changed by the NoR or these Sailing Instructions.
- 1.3. RRS40 Personal Flotation Devices – RRS 40.1 applies at all times whilst afloat.
- 1.4. Handicap Racing will be scored using the RYA Portsmouth Yardstick scheme.
- 1.5. In accordance with RRS Appendix G3, a boat chartered or loaned for this event may carry national letters or sail numbers in contravention to her class rules.

2. CHANGES TO SAILING INSTRUCTIONS

- 2.1. Any changes to the Sailing Instructions will be posted before 09:00 hours on the day it will take effect, except that any change to the schedule of races will be posted by 19:00 hours on the day before it will take effect.

3. COMMUNICATIONS WITH COMPETITORS

- 3.1. Notices to competitors will be posted on the official notice board located at [BUSA website](#)
- 3.2. The Race Office is located on the ground floor Royal Torbay Yacht Club.
- 3.3. (DP) While racing, except in an emergency, a boat shall not make voice or data transmissions and shall not receive voice or data communication that is not available to all boats. This restriction also applies to mobile telephones.
- 3.4. An event competitor's [WhatsApp group](#) will be used, providing notifications and Race Committee (RC) communications whilst ashore. Failure to receive WhatsApp messages shall not be grounds for redress. This changes RRS 62.1(a).

4. CODE OF CONDUCT

- 4.1. (DP) Competitors and support persons shall comply with reasonable requests from race officials.

5. SIGNALS MADE ASHORE

- 5.1. Signals made ashore will be displayed on the flagpole at the inshore end of Haldon Pier, adjacent to the slipway.
- 5.2. When AP is displayed ashore, 1 minute is replaced with not less than 45 minutes in Race Signals AP.
- 5.3. (DP) D flag with one sound means Boats shall not launch until this signal is made. The warning signal will not be made before the scheduled time or less than 45 minutes after flag D is displayed.

6. REGISTRATION AND SCHEDULE OF RACES

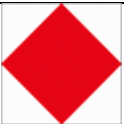




- 6.1. Registration will take place in the Race Office on the ground floor Royal Torbay Yacht Club on Friday 8th November from 16.30 to 18.30 and on Saturday 9th November from 08.30 to 09.15.
- 6.2. There will be a competitors' briefing on Haldon Pier at 09.30 on Saturday 9th November 2024.
- 6.3. Dates and Number of Races:

Date	Event	Time	Number of Races
Friday 8 th November	Registration	16.30 - 18.30	
Saturday 9 th November	Registration Competitors Briefing First warning signal	08.30 – 09.15 09.30 10.55	Up to 4 races
Sunday 10 th November	Competitor briefing First Warning Signal	09.15 10.25	Up to 4 races

- 6.4. It is intended to run 6 races over two days with up to 4 races on any one day, depending upon prevailing and forecast weather, conditions and sea state.
- 6.5. On Sunday 10th November, no warning signal will be made after 14:30 hours.

7. CLASS FLAGS

7.1

Firefly Fleet		Fast Handicap Fleet	
Pink Course		Yellow Course	
ILCA Handicap Fleet		Slow Handicap Fleet	
Yellow Course		Yellow Course	

8. RACING AREA

- 8.1 Racing will take place in Tor Bay, see Addendum 1.
- 8.2 Firefly Fleet - Pink Course Area
- 8.3 Handicap Fleets – Yellow Course Area

9. THE COURSES

- 9.1. The course diagram and configuration are shown in Addendum 2.
- 9.2. No later than the warning signal, the main Race Committee (RC) vessels will display the course to be sailed and the approximate bearing of the first leg.
- 9.3. If one of the two gate marks is missing the remaining mark shall be rounded to Port.
- 9.4. If a course is shortened such that the finish is at the leeward end of the course, then the finish line will be that defined in paragraph 14 below. This changes RRS 32.

10. MARKS

- 10.1. Pink Course - Marks will be Orange inflatables.
- 10.2. Pink Course - The change mark will be a Black inflatable.
- 10.3. Yellow Course – Marks will be Yellow inflatables.
- 10.4. Yellow Course – The change mark will be an Orange inflatable with a White band.
- 10.5. The start mark will be a RC vessel with a mast displaying an Orange flag or a White Danbuoy displaying an Orange flag.
- 10.6. The finish mark will be White Danbuoy displaying a Blue flag.

11. OBSTRUCTIONS

- 11.1. (DP) The following is an obstruction – A yellow buoy with associated trailing buoys serving as a wave monitor located at approximately 050°433N 003°517W.

12. THE START

- 12.1. The starting line will be between the mast on the RC vessel displaying an orange flag at the Starboard end and the start mark at the Port end.
- 12.2. To alert boats that a race will soon begin, the orange starting line flags will be displayed with one sound not less than 5 minutes before a warning signal is displayed.
- 12.3. (DP) Boats for which the warning signal has not been made shall keep clear of the starting area.
- 12.4. Races will not be started until the Race Officer (RO) is satisfied that the wind strength across the course is 4 knots or greater.
- 12.5. A boat that does not start within 4 minutes after her starting signal will be scored 'Did not Start' without a hearing. This changes RRS A5.1 and A5.2.

13. CHANGE OF THE NEXT LEG OF THE COURSE

- 13.1. To change the next leg of the course the RC will lay a new mark and remove the original mark as soon as practicable. When in a subsequent change and a new mark is replaced, it will be replaced by an original mark. This changes RRS 33.
- 13.2. Minor course changes (up to 150m) may not be signalled. This changes RRS 33.

14. THE FINISH

- 14.1. The Finish Line will be between a staff displaying a blue flag on the RC vessel and the finish mark.
- 14.2. If a course is shortened such that the finish is at the leeward end of the course, then the finish line will be that defined in 14.1. This changes RRS 32.2
- 14.3. Alternative Finishing Line / W Flag. In the Firefly Class only, the RC may give a finishing place to any boat that is still racing by displaying W Flag to her from an official vessel (which may be in motion) with two sounds. A boat's finishing place in these circumstances will be the place she would have

received had she sailed the course and finished within any time limit, without gaining or losing any place. Boats that are finished in this way shall return to the starting area immediately. This changes RRS 35, A4 and A5.

- 14.4. In the Handicap Classes any boat failing to finish within 20 minutes after the first boat in their class that sails the course, and finishes will be scored DNF. This changes RRS 35, A4 and A5.

15. PENALTY SYSTEM

15.1 Penalties will be in accordance with RRS 44 excluding 44.3. This changes RRS 44.

15.2 RRS 44.1 is changed so that the Two-Turns Penalty is replaced by the One-Turn Penalty.

16. TIME LIMITS AND TARGET TIMES

16.1. There are no time limits.

16.2. The target time for the first boat to finish will be 45 minutes.

16.3. Failure to meet a target time will not be grounds for redress. This changes RRS 62.1(a)

17. HEARING REQUESTS

17.1. See NoR 14.

17.2. The Protest Time Limit is 75 minutes after the last boat on that course has finished the last race of the day or, the race committee signals no more racing today, whichever is the later. The time will be posted on the official notice board.

17.3. Hearing request forms are available from the race office.

17.4. Notices will be posted no later than 30 minutes after the protest time limit to inform competitors of hearings in which they are parties or named as witnesses. Hearings will take place in a Protest Room located at the Royal Torbay Yacht Club, beginning at the time posted.

18. SCORING

18.1 See NoR 15.

19. SAFETY REGULATIONS (DP)(NP)

19.1. The tally control point to check-out and check-in will be located at the top of the slipway from Haldon Pier.

19.2. All helms and crews shall individually check-out before racing by personally advising Tally control point of their sail number.

19.3. All helms and crews shall also individually check-in immediately on returning to shore after racing, but no later than the protest time limit, by personally advising Tally control of their sail number.

19.4. The race committee may protest a boat for a breach of these safety regulations.

19.5. A boat that retires from a race shall notify the race committee as soon as possible.

19.6. When returning to the harbour after racing, boats may be held outside the harbour entrance to avoid unnecessary congestion on the slipway. All boats are required to follow the instructions of the safety ribs supervising this process.

20. REPLACEMENT OF CREW OR EQUIPMENT (DP)(NP)

20.1. Substitution of competitors is not allowed without the prior written approval of the race committee. Requests should be made in writing and submitted to the Race Office

20.2. Substitution of damaged or lost equipment will not be allowed without the written approval of the race committee. Requests shall be made in writing and submitted to the race office at the first reasonable opportunity.

21. EQUIPMENT AND MEASUREMENT CHECKS (DP)(NP)

21.1. See NoR 9

22. SUPPLIED BOATS

22.1 See NoR 12

23. OFFICIAL VESSELS (NP)

23.1. The RC vessel will be identified by a Pink Flag on the Pink Course and a Yellow flag on the Yellow course. See Addendum 3.

23.2. The Photography boat will be identified by a white flag with the letter “P” on the flag.

23.3. Mark laying boats will be identified by a yellow flag with the letter “M” on the flag

23.4. Safety boats will be identified by a Yellow flag.

24. SUPPORT TEAMS (DP)(NP)

24.1. Support person vessels will not be allowed.

25. TRASH DISPOSAL (DP)(NP)

25.1. Trash may be placed aboard official vessels or brought back to shore and disposed of.

26. BERTHING (DP)(NP)

26.1. Boats and trailers shall be parked on Haldon Pier, Torquay in spaces allocated by the RTYC Beachmaster.

27. HAUL-OUT RESTRICTIONS

Does not apply

28. DIVING EQUIPMENT AND PLASTIC POOL

Does not apply

29. PRIZES

29.1. See NoR 21.

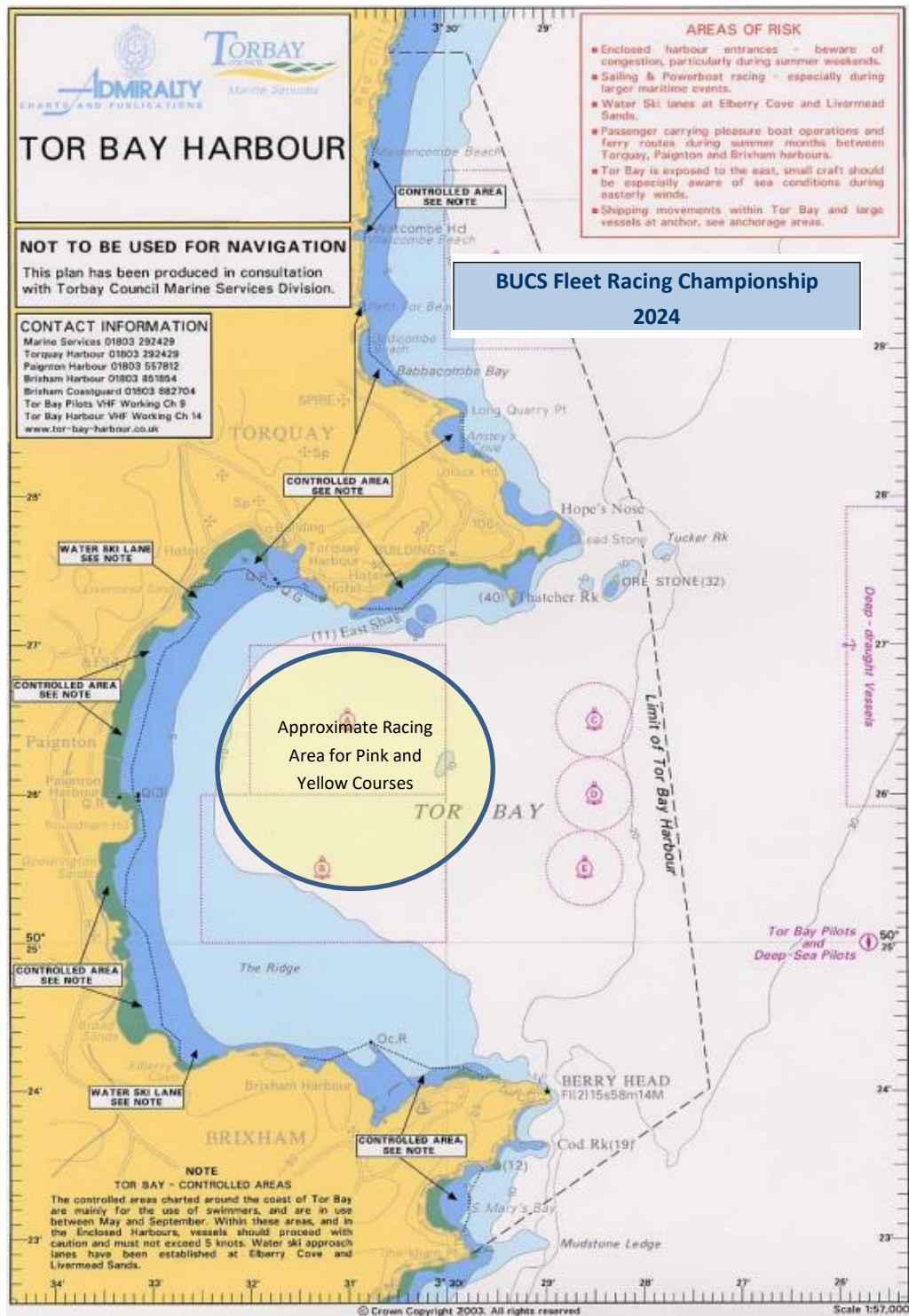
30. RISK STATEMENT

30.1. See NoR 19

31. INSURANCE

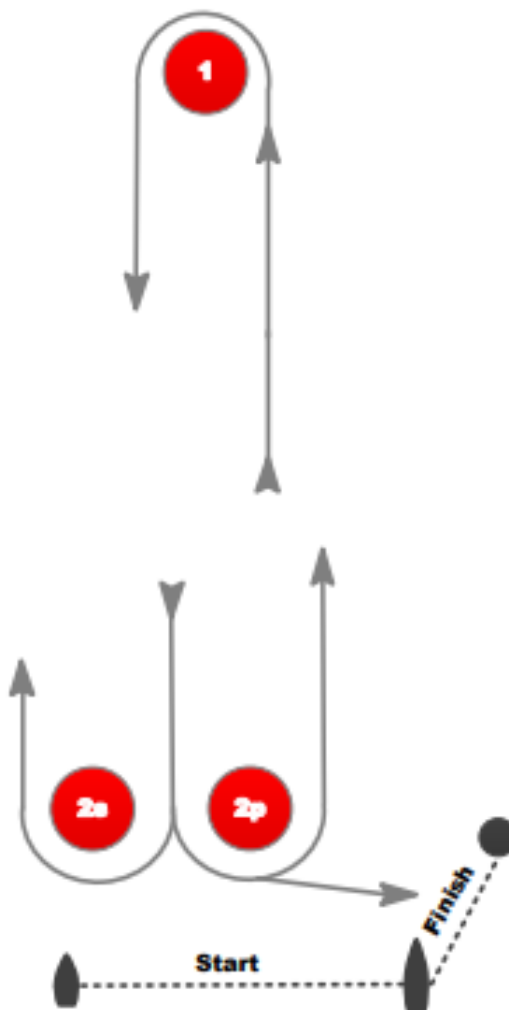
31.1. See NoR 20.

Addendum 1 – Racing Area



Addendum 2 - Course

L	COURSE: WINDWARD / LEEWARD with reaching finish
Signal	Mark Rounding Order
L2	Start – 1 – 2s/2p – 1 – 2p – Finish
L3	Start – 1 – 2s/2p – 1 – 2s/2p – 1 – 2p – Finish



If one or other of the gate marks is missing, the remaining mark shall be rounded to port. This changes RRS 34

ADDENDUM 3 -RACE COMMITTEE VESSELS



Mary Gurine - Pink Course Area



Fidelitas – Yellow Course Area