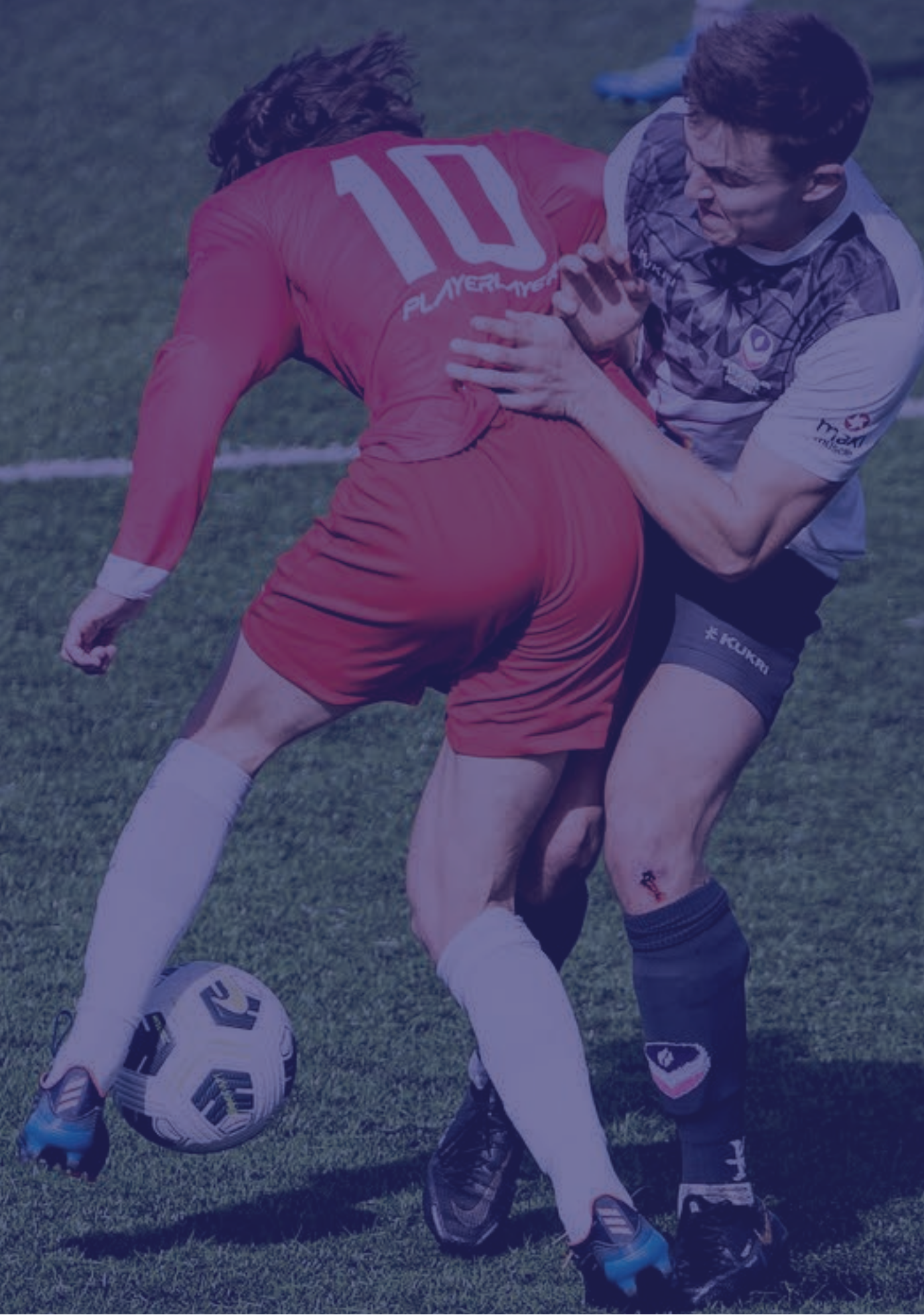


FOOTBALL DEVELOPMENT IMPACT REPORT

2022 - 2023



ACCREDITED
UNIVERSITIES
PART OF ENGLAND FOOTBALL



FOOTBALL DEVELOPMENT IMPACT REPORT 2022 - 2023

OVERVIEW

PARTICIPANTS

50,349

Recreational participants engaged this season
(including 1,119 with disabilities)

Female recreational participants engaged

ACTUAL **5,203**
+344%

TARGET **1514**

Male recreational participants engaged

ACTUAL **44,027**
+184%

TARGET **23,976**



MEMBER SERVICES

22

Member services



414 Member engagements

21 Students on the BUCS and FA Women's Leadership Programme

43 Alumni from the BUCS and FA Women's Leadership Programme

95 Unique students attended Club Committee Leaders events

TOTAL ENGAGEMENTS **306**

171 FEMALE PARTICIPANTS

113 MALE PARTICIPANTS

ACCREDITATION AND DEVELOPMENT PROJECTS



Total number of Accredited Universities



7 Development projects

683 New participants engaged this season
TARGET **600**

WORKFORCE

Number of students engaged in BUCS development opportunities



171 FEMALE **113** MALES

59 From Historically Underrepresented Groups
TARGET **24**

133 Female students in Leadership pathway
TARGET **121**
24 From Historically Underrepresented Groups
TARGET **12**

21 Students graduated from The Women's Leadership Programme
TARGET **16**
4 From Historically Underrepresented Groups
TARGET **2**

PARTICIPANTS

RECREATIONAL

31,065
Intramural
players

90% MALE
8% FEMALE

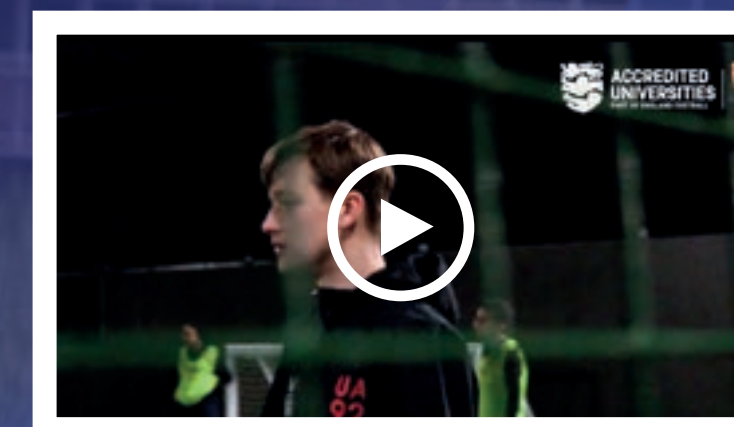
50,349

Recreational participants
engaged this season
(including 1,119 with disabilities)

11,347
Turn up and
play

85% MALE
15% FEMALE

LEARN MORE



FOOTBALL DEVELOPMENT IMPACT REPORT 2022- 2023

ACCREDITATION

Accreditation is an operating model which aims to unite the delivery of football under consistent standards to raise both the equality of access of football provision and the quality of that provision.



The 119 paid staff attending CPD were from 69 higher education institutions and 13 other organisations across the sector.



46 Institutions attending research webinars

36 Institutions attended football development network day

20 Institutions took up a bursary (Inclusivity Fund)

14 Institutions involved in higher education and county FA working groups

7 Development projects run across accredited universities

6 Institutions involved in IMS pilot

WORKFORCE

171
FEMALE

27

From Historically Underrepresented Groups

284

Unique students engaged in a member service

TARGET
242

131
MALE

32

From Historically Underrepresented Groups

"WLP challenged me to develop myself in a way that I hadn't before. Since WLP I've gone onto work at a County FA, before taking my new role as an EDI coordinator. The program helped me build confidence and resilience and building the skills I need for the workplace. It's guided me to new opportunities in Football, including the FA National Youth Council."

CHARLOTTE AKESTER

WOMEN'S LEADERSHIP PROGRAMME ALUMNI

LEARN MORE



DEVELOPMENT PROJECTS

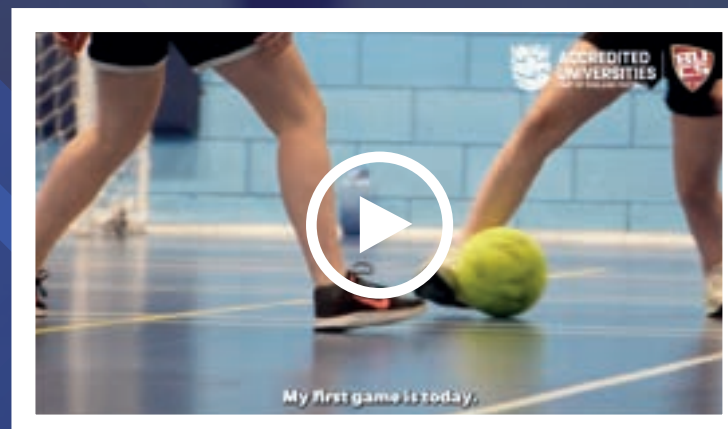
PROJECT OUTCOMES:

1. **Service** the game

2. **Transition** the game

3. **Grow** the game

LEARN MORE



£41,750
of funding provided

7 DEVELOPMENT PROJECTS



683 TARGET
600
New participants
engaged this season



**ACCREDITED
UNIVERSITIES**
PART OF ENGLAND FOOTBALL



CONTACT DETAILS

British Universities and Colleges Sport (BUCS)
20 – 24 King's Bench Street
London, SE1 0QX
info@bucs.org.uk

